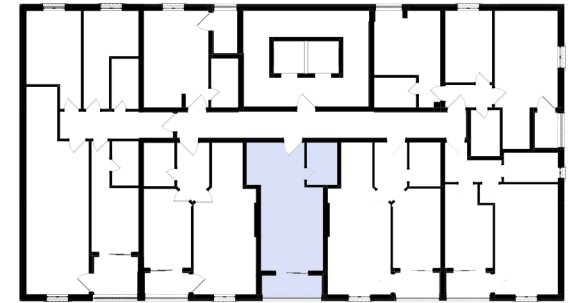
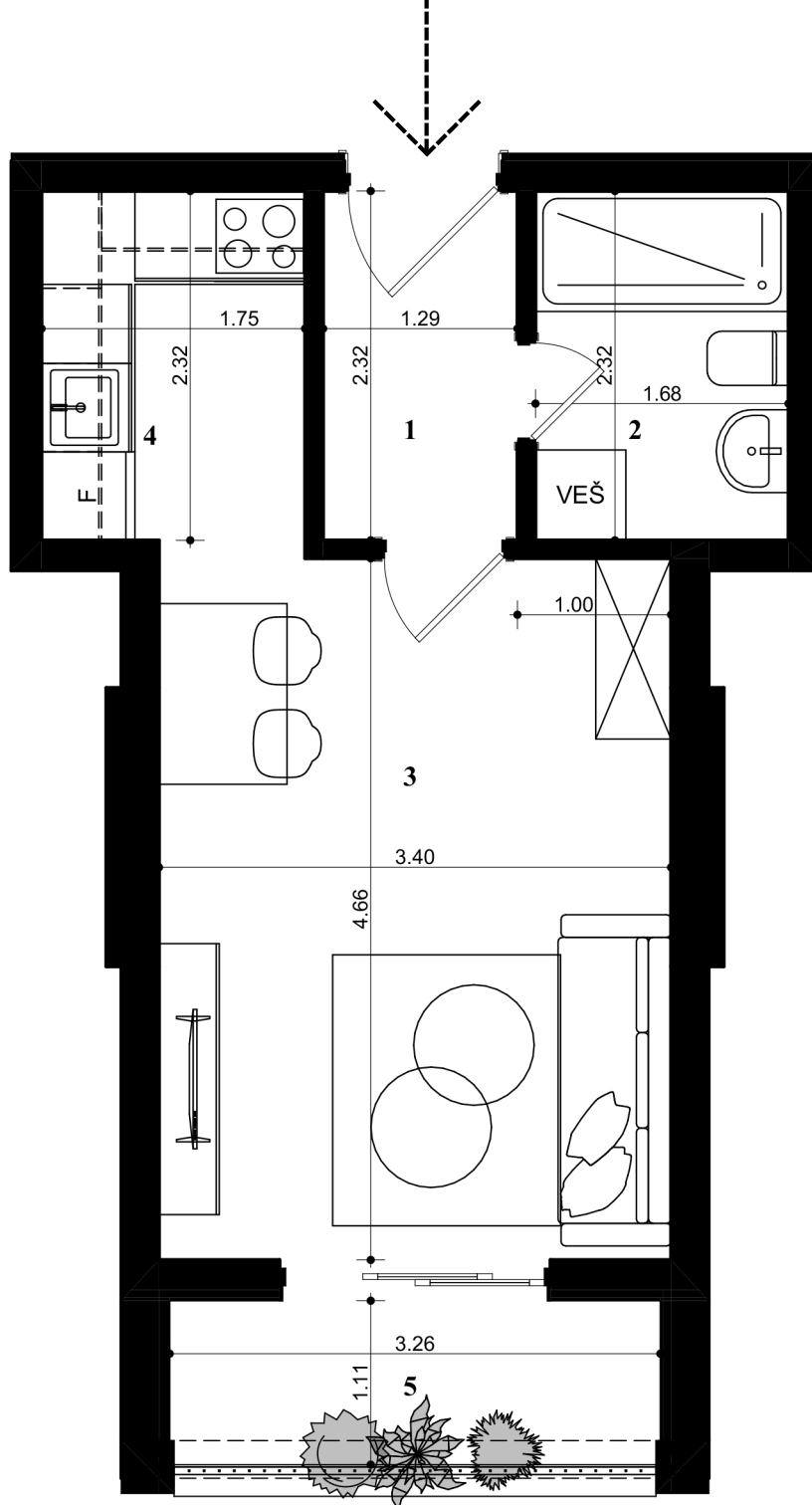


# LAMELA -A-



GARSONJERA	STAN PD04
1. hodnik	2.99m <sup>2</sup>
2. kupatilo	3.90m <sup>2</sup>
3. dnevni boravak	15.62m <sup>2</sup>
4. kuhinja	4.06m <sup>2</sup>
5. terasa	4.24m <sup>2</sup>
<b>UKUPNA POVRŠINA:</b>	<b>30.81m<sup>2</sup></b>