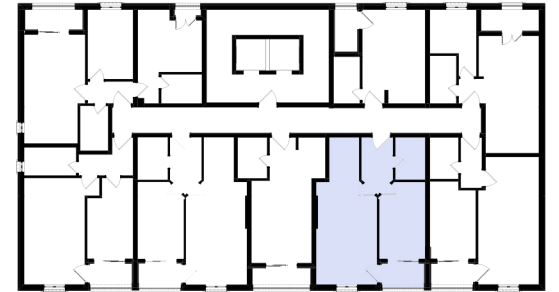
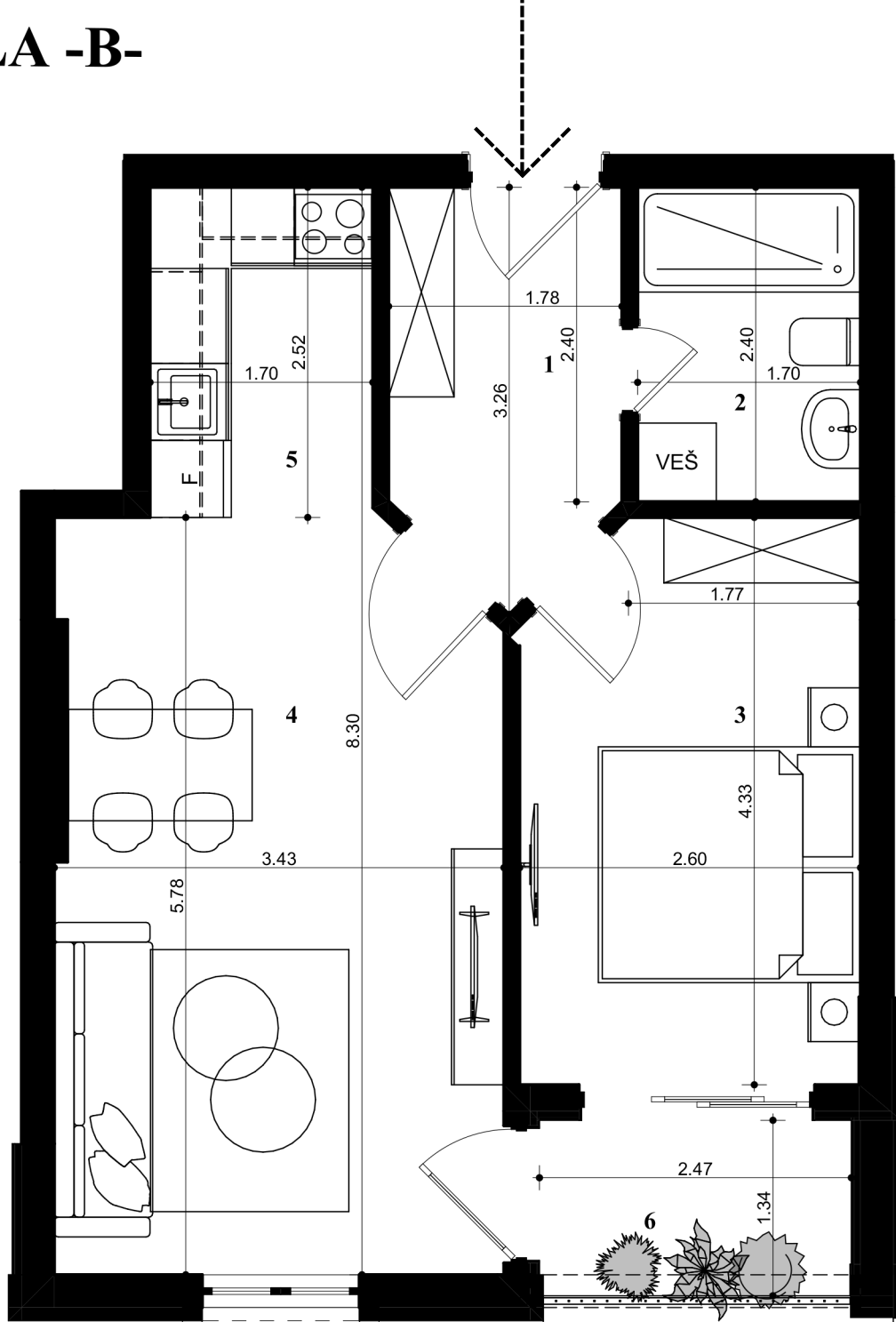


LAMELA -B-



JEDNOSOBAN	STAN PD03
1. hodnik	5.03m ²
2. kupatilo	4.08m ²
3. spavaća soba	10.92m ²
4. dnevni boravak	19.43m ²
5. kuhinja	4.28m ²
6. terasa	3.68m ²
UKUPNA POVRŠINA:	47.42m²