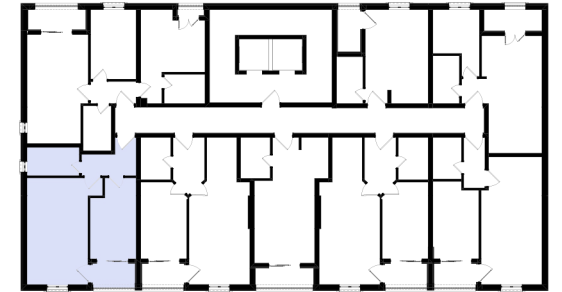
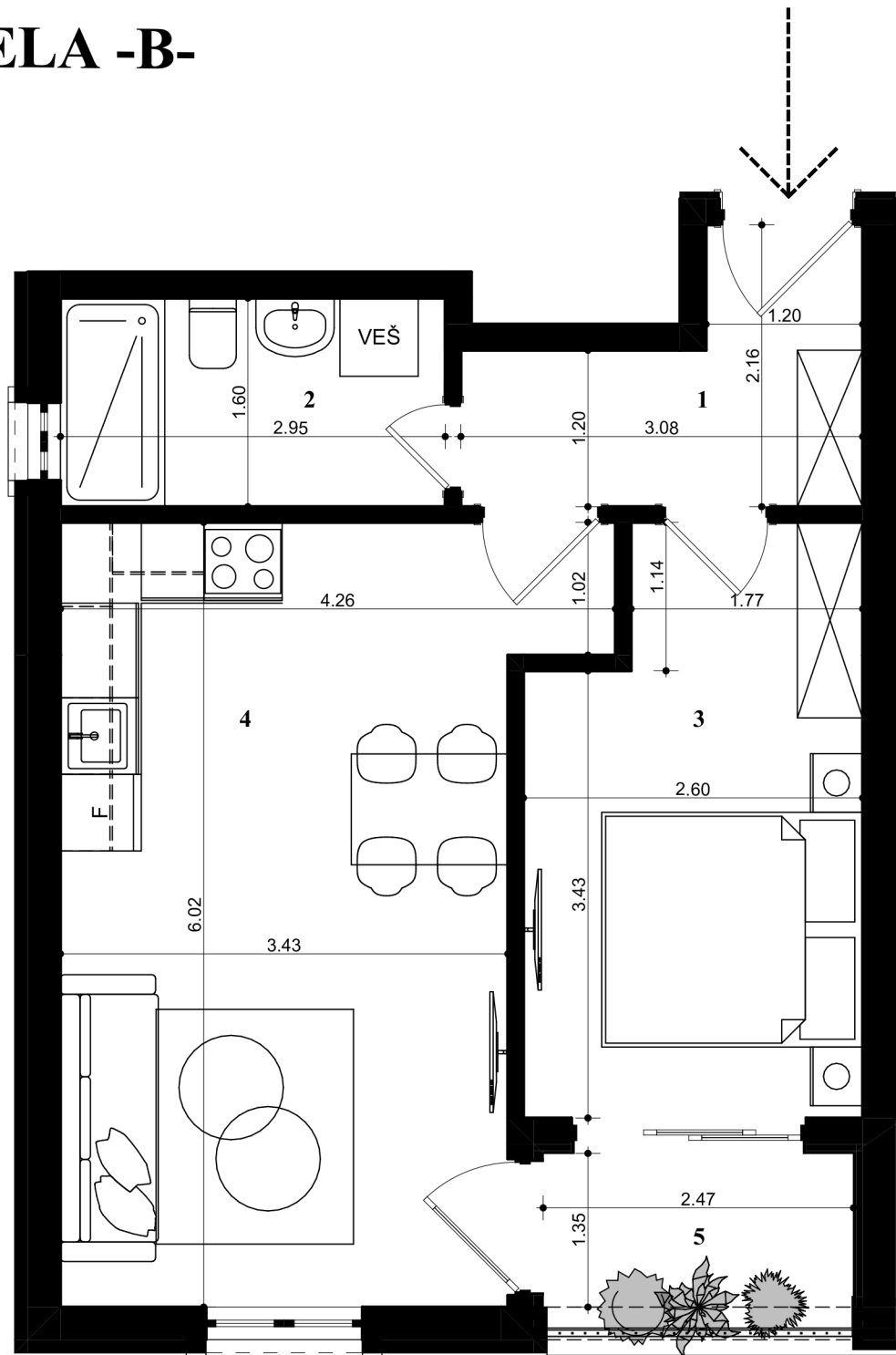


LAMELA -B-



| JEDNOSOBAN | STAN PD06 |
|-----------------------------|---------------------------|
| 1. hodnik | 4.85m ² |
| 2. kupatilo | 4.72m ² |
| 3. spavaća soba | 10.94m ² |
| 4. dnevni boravak i kuhinja | 21.48m ² |
| 5. terasa | 3.68m ² |
| UKUPNA POVRŠINA: | 45.67m² |