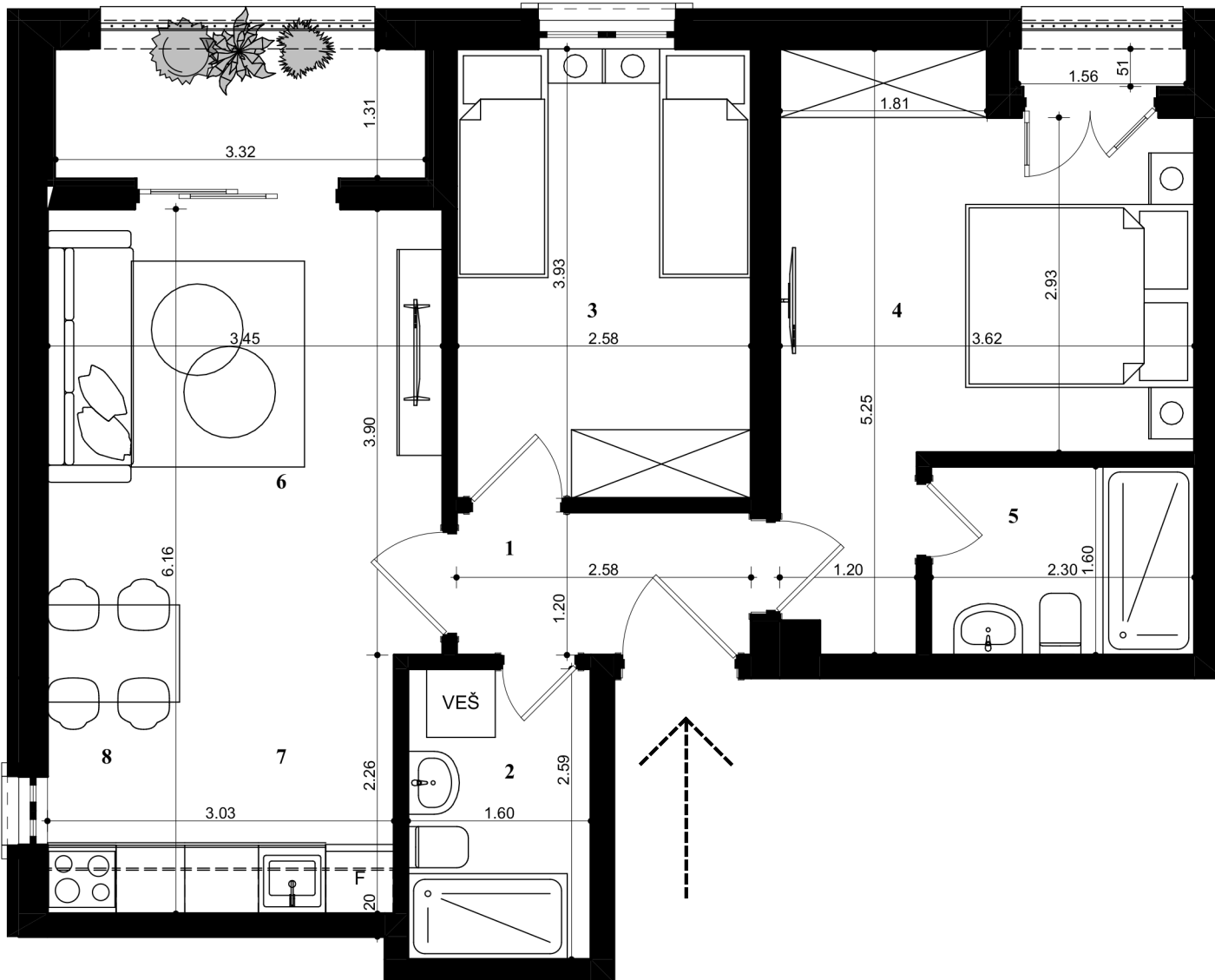
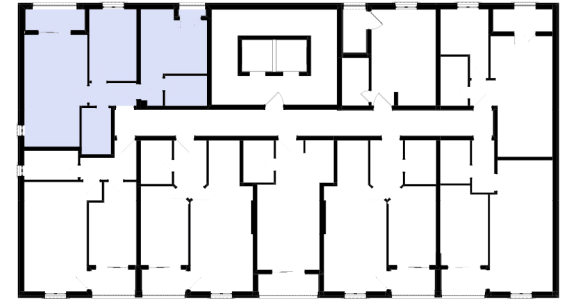


# LAMELA -B-



DVOSOBAN	STAN PD07
1. hodnik	3.20m <sup>2</sup>
2. kupatilo	4.15m <sup>2</sup>
3. spavaća soba 1	10.12m <sup>2</sup>
4. spavaća soba 2	13.77m <sup>2</sup>
5. kupatilo	3.69m <sup>2</sup>
6. dnevni boravak	14.86m <sup>2</sup>
7. kuhinja	5.44m <sup>2</sup>
8. terasa	5.31m <sup>2</sup>
<b>UKUPNA POVRŠINA:</b>	<b>60.35m<sup>2</sup></b>